

P-14-89  
1906

Courses &c. up ye Ck.

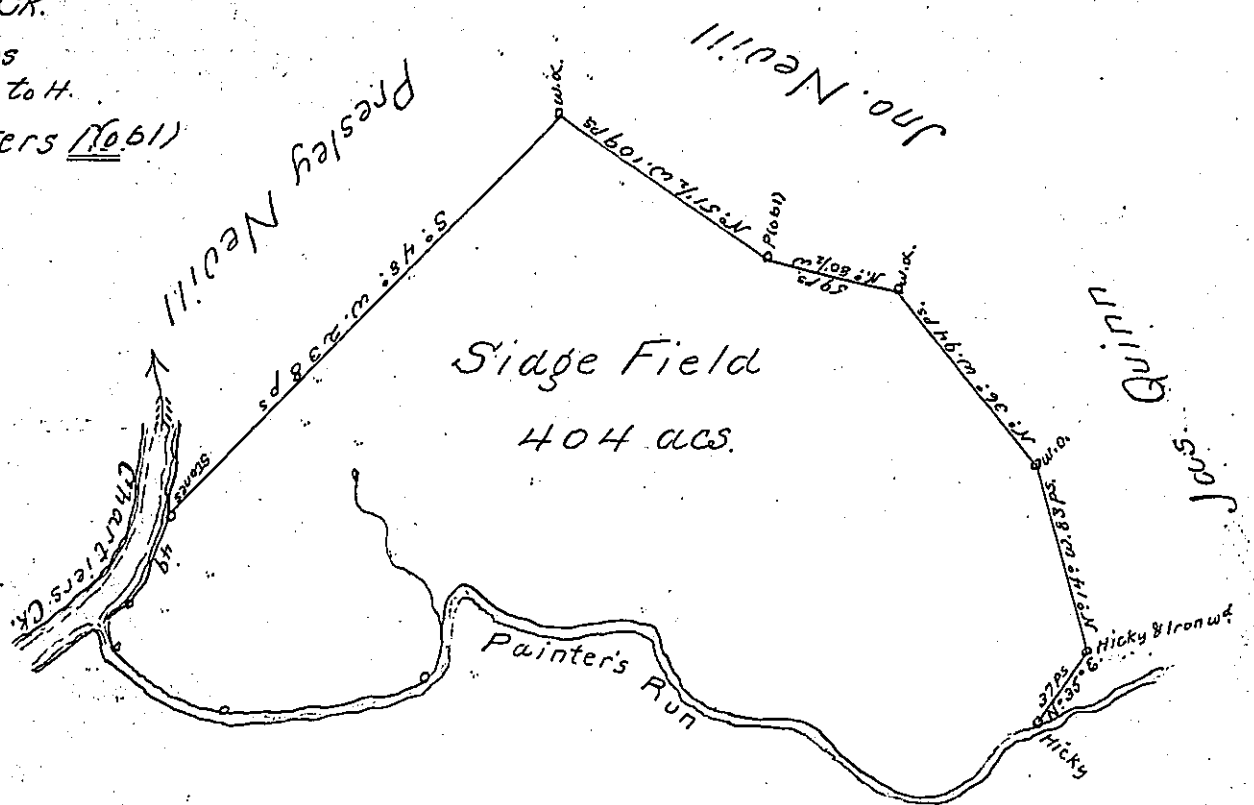
49 { 5:29 W. 40 ps  
5:59 E. 9 Do to H.

thence up Painters (No. 51)

- 5: 4: E. 15 ps
- 3: 59 E. 54 Do.
- N: 85 E. 87 Do.
- N: 18 E. 47 Do.
- 5: 64 E. 59 Do.
- N: 80 E. 28 Do.
- 5: 30 E. 46 Do.
- 5: 81 E. 48 Do.
- 5: 45 E. 51 Do.
- N: 84 E. 26 Do.
- N: 45 E. 28 Do.
- N: 73 E. 21 Do.

to ye Hicky & Iron w<sup>g</sup>

510



A Draught of a Survey called "Sidge Field" situate on Chartiers Ck. in Washington County, contg. 404 acs. strict measure executed July 2d. 1787 in consequence of a Certificate for 400 acs. granted to J<sup>o</sup> Nevill by the Commis<sup>rs</sup> appointed by Virginia to adjust the claims to unpatented Lands in the Counties Monong<sup>a</sup> York<sup>a</sup> & Ohio and duly entered with the County Surv. &c.

ret'd. 17 May 87

Ent'd. 20 Dec. 79.

Mathew Ritchie Esq.

Jno. Lukens Esqr. S. Genl.

IN TESTIMONY that the above is a copy of the original remaining on file in the Department of Internal Affairs of Pennsylvania, made conformably to an Act of Assembly approved the 16th day of February, 1833, I have hereunto set my Hand and caused the Seal of said Department to be affixed at Harrisburg, this first day of October 1901

*James W. Latta*  
Secretary of Internal Affairs.